
2017 CZ stock assessment - update

Corey Green

Date 29 September 2017





2017 Central Zone stock assessment update

Fisheries dependent data (Standardised CPUE)

Zone: 1992/93 – 2016/17

SMU: 2003/04 – 2016/17

Fisheries independent data (Standardised counts 143 sites)

Zone: 1992/93 – 2016/17

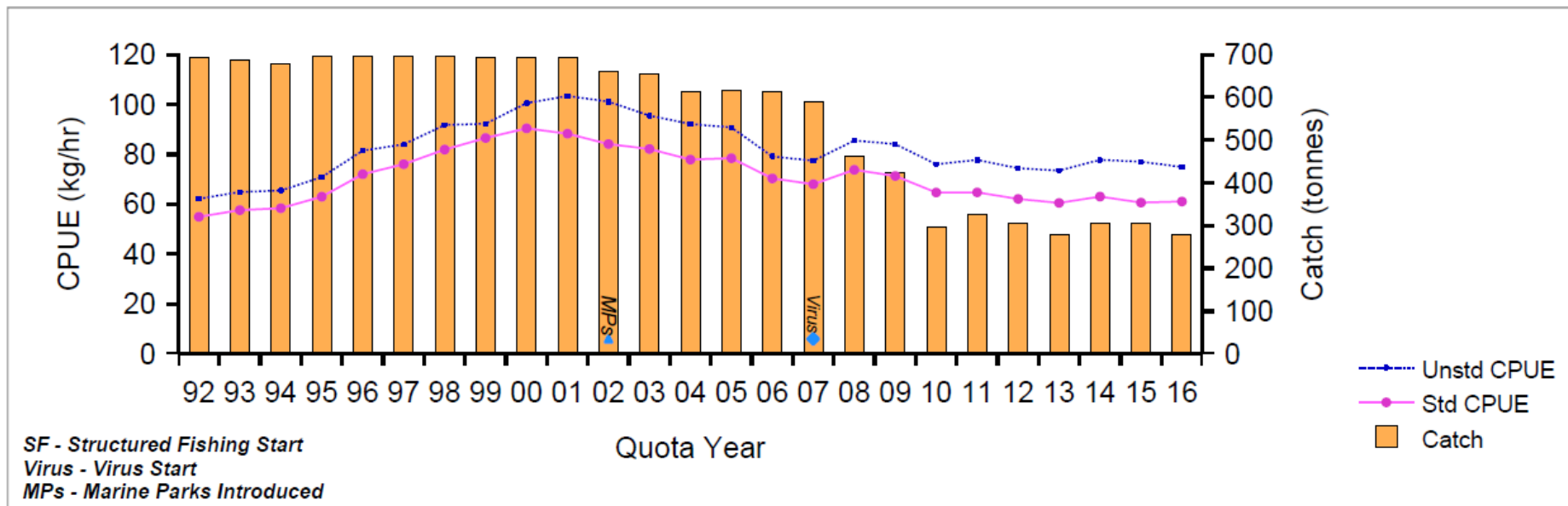
SMU: 2003/04 – 2016/17

Trend analysis performed on each of the performance indicators

2017 Central Zone stock assessment update

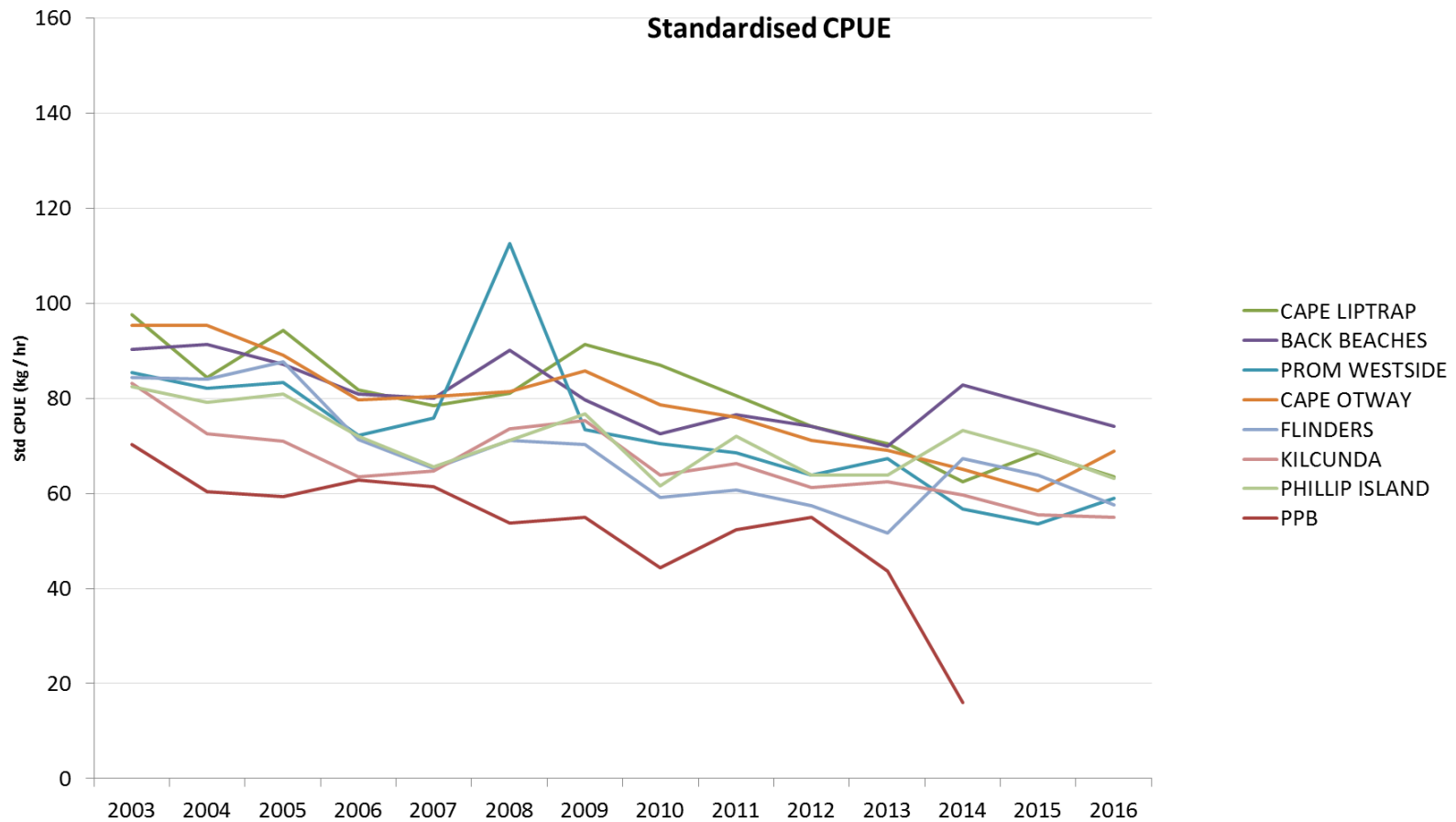
CPUE - Zone

Standardised CPUE Analysis				
Trends		Statistics		
Start Year	End Year	Slope Direction	P-Value	Significant
1992	1999	Positive	< 0.05	Yes
1999	2016	Negative	< 0.05	Yes



2017 Central Zone stock assessment update

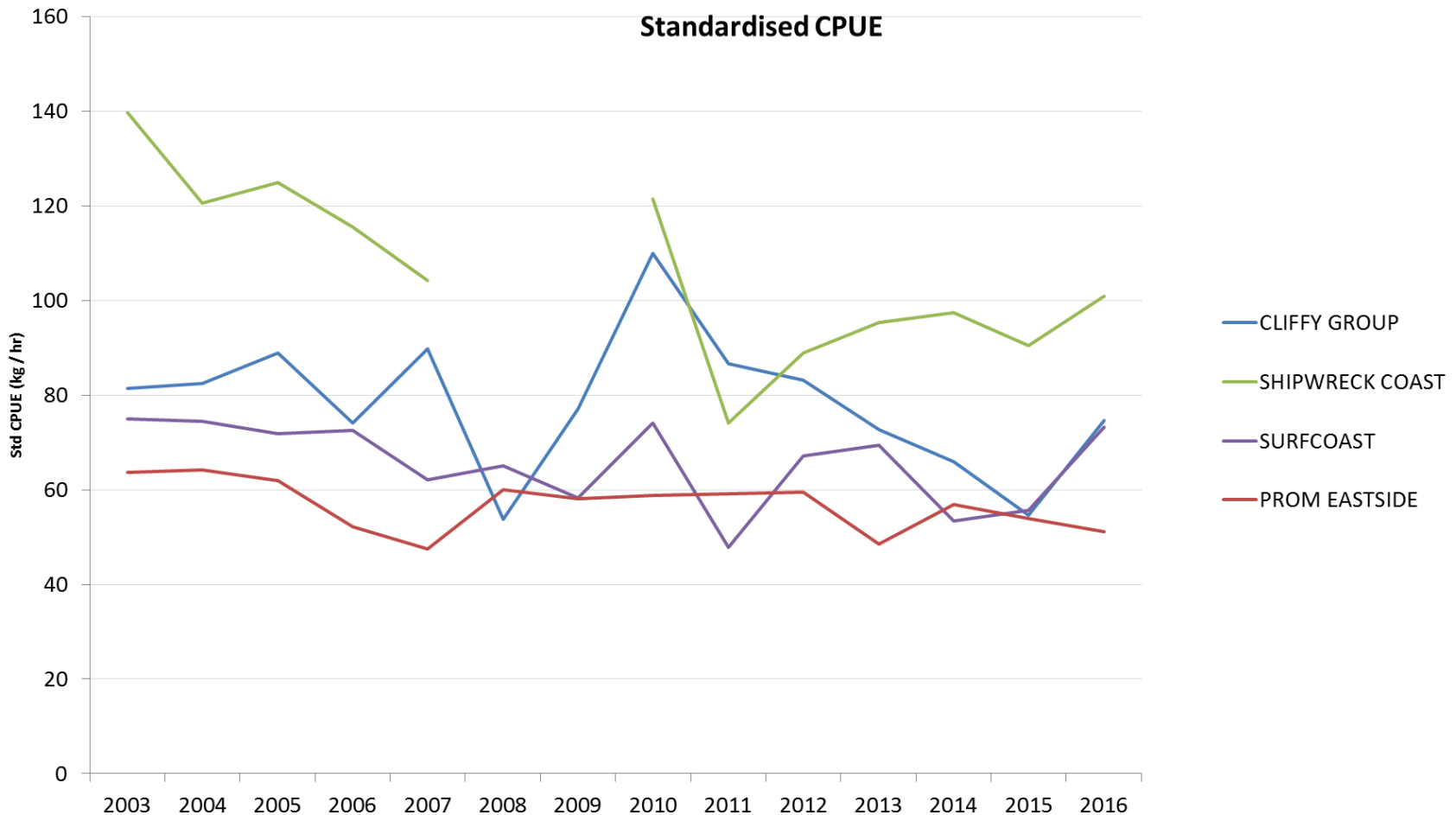
CPUE by SMU Negative trend



2017 Central Zone stock assessment update

CPUE by SMU

Non significant trend

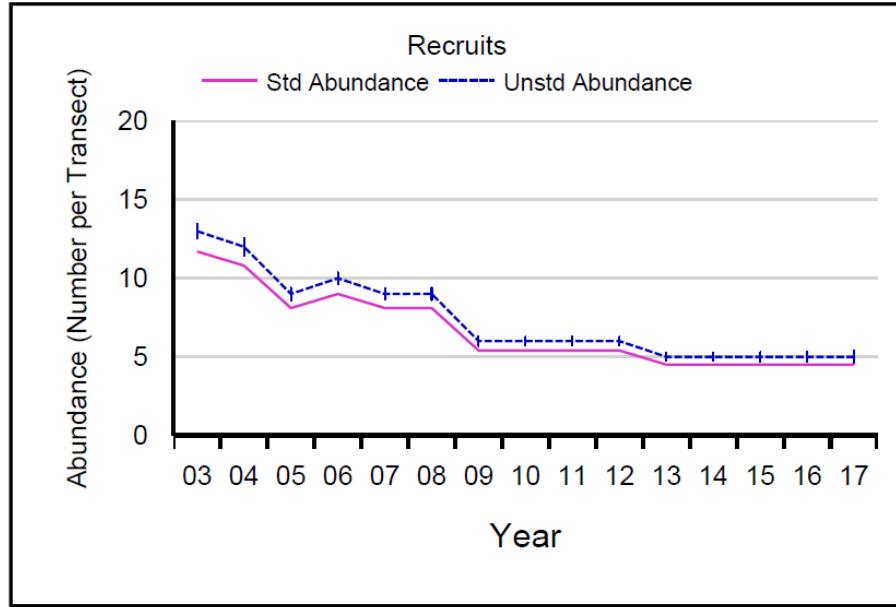
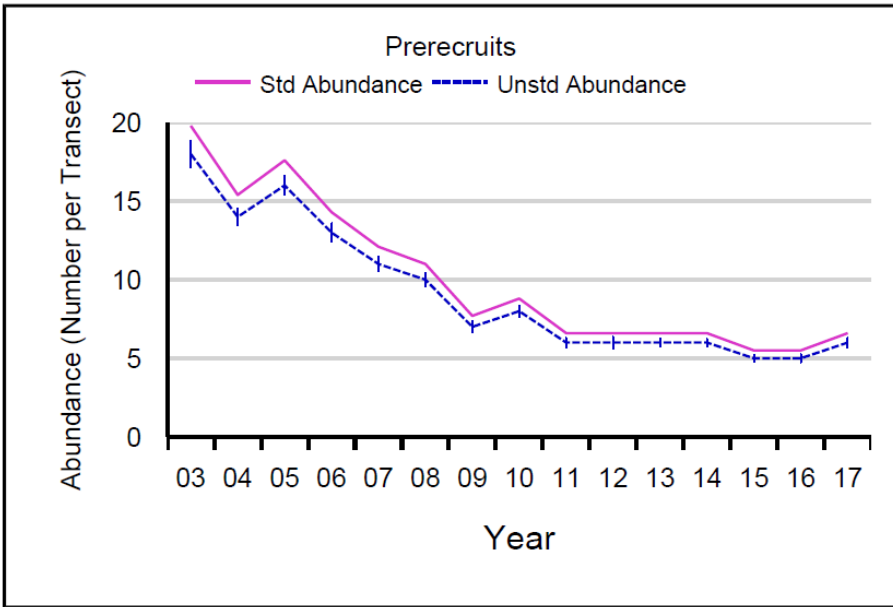


2017 Central Zone stock assessment update

Abundance by zone

Standardised Prerecruits Analysis				
Trends		Statistics		
Start Year	End Year	Slope Direction	P-Value	Significant
2003	2009	Negative	< 0.05	Yes
2009	2017	Negative	< 0.05	Yes

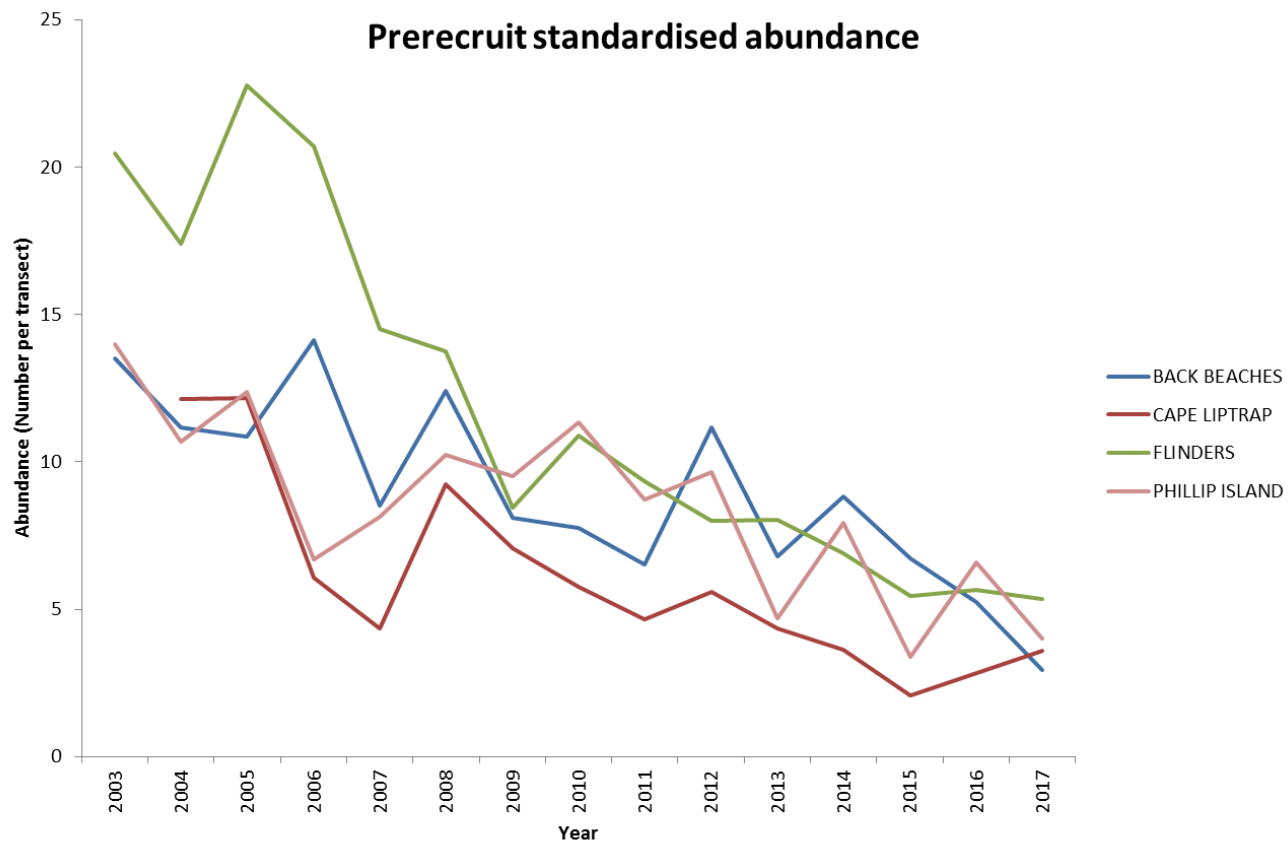
Standardised Recruits Analysis				
Trends		Statistics		
Start Year	End Year	Slope Direction	P-Value	Significant
2003	2009	Negative	< 0.05	Yes



2017 Central Zone stock assessment update

Prerecruit abundance by SMU

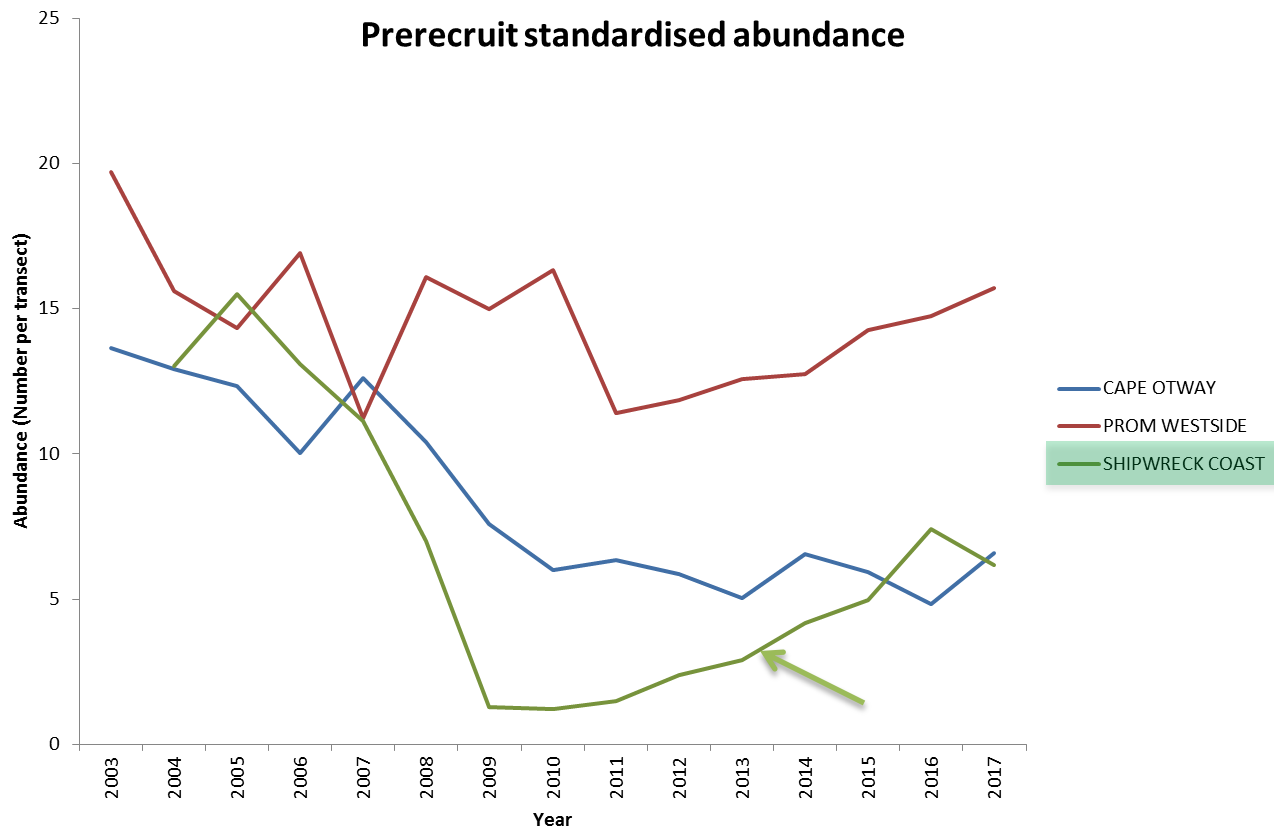
Negative trend



2017 Central Zone stock assessment update

Prerecruit abundance by SMU

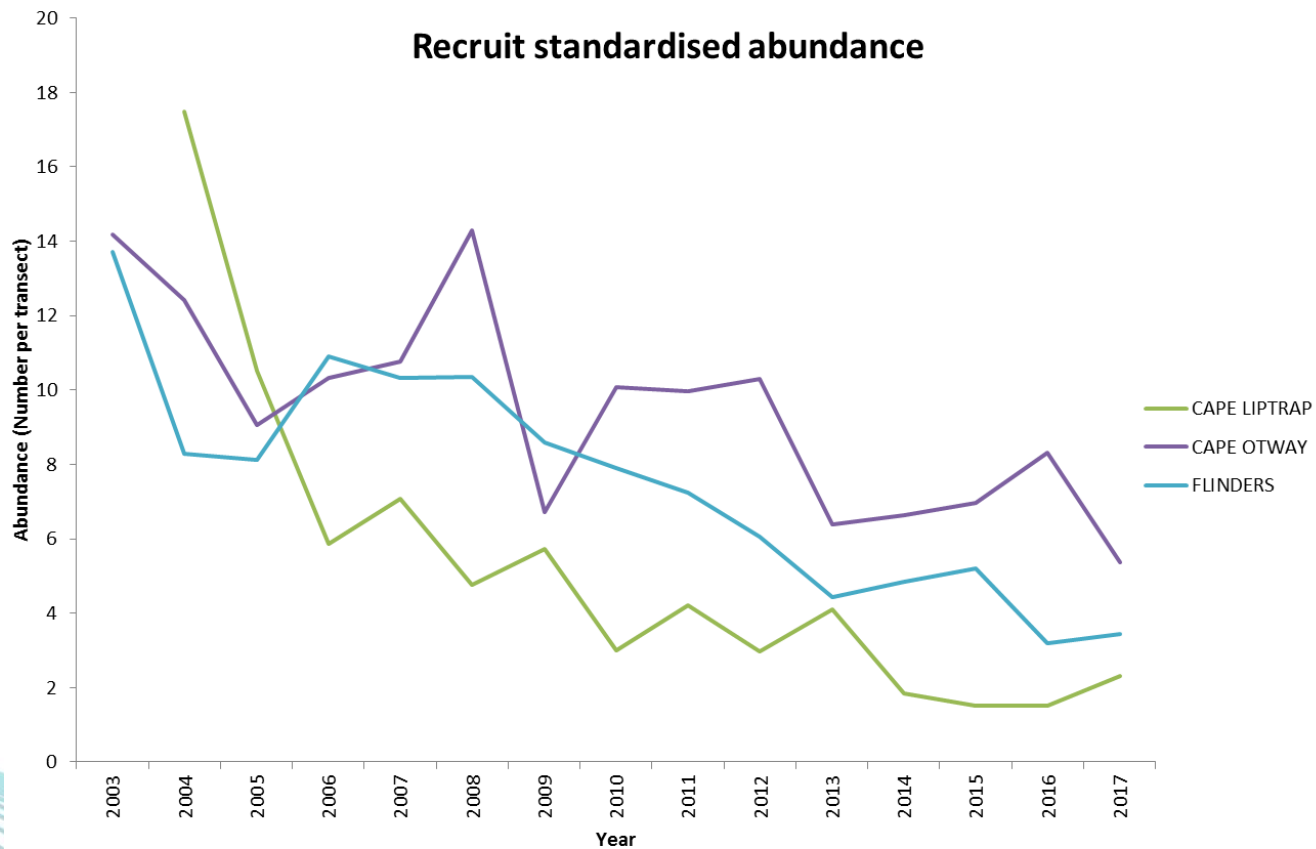
Positive and non significant trend



2017 Central Zone stock assessment update

Recruit abundance by SMU

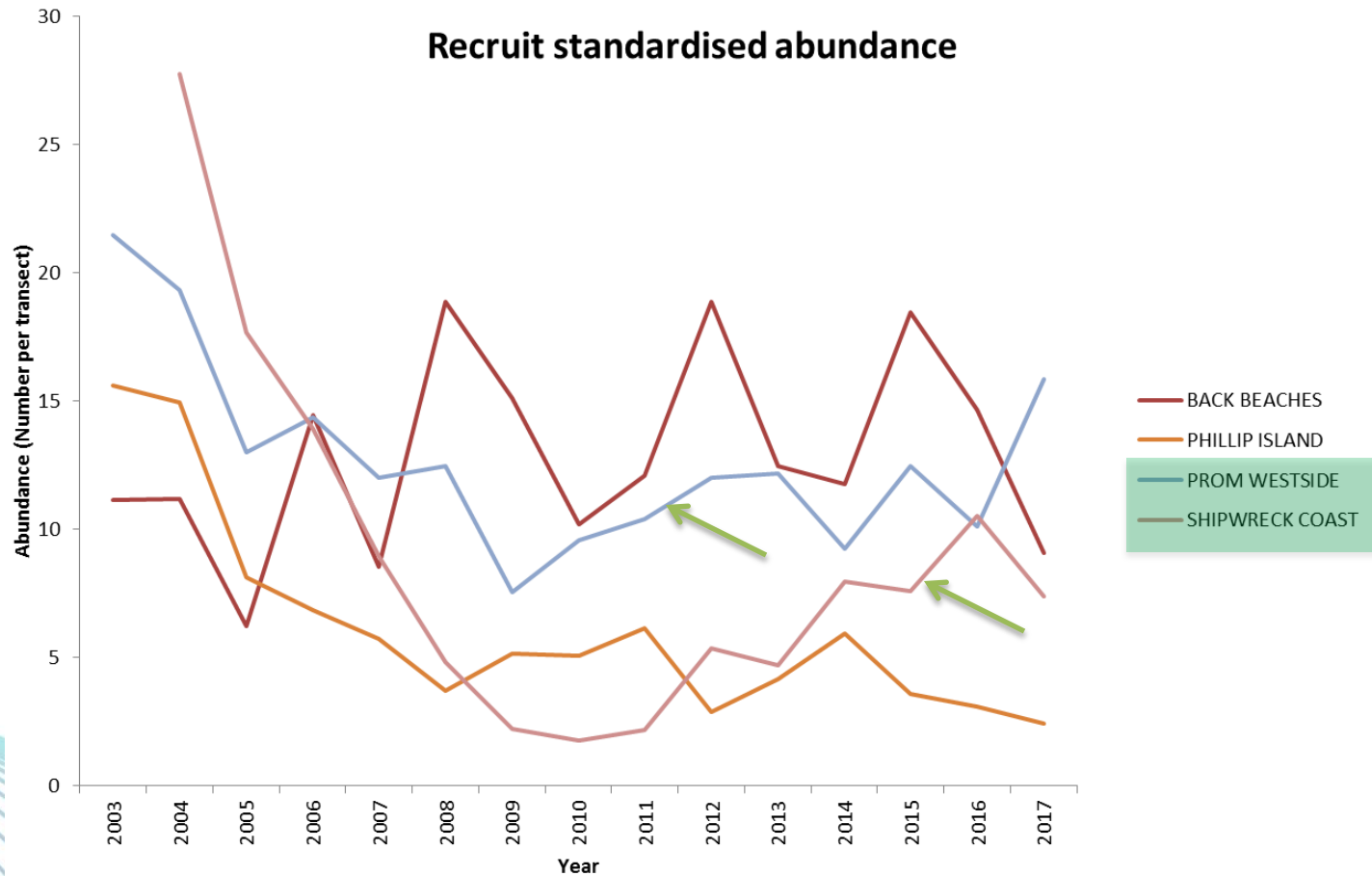
Negative trend



2017 Central Zone stock assessment update

Recruit abundance by SMU

Positive and non significant trend



Summary

SUMMARY OF KEY PERFORMANCE MEASURES - CPUE AND ABUNDANCE TREND - SMU			
Block	CPUE Trend	Prerecruits	Recruits
SHIPWRECK COAST	NS	+	+
CAPE OTWAY	—	NS	—
SURFCOAST	NS	No Data	No Data
PPB	—	No Data	No Data
BACK BEACHES	—	—	NS
FLINDERS	—	—	—
PHILLIP ISLAND	—	—	NS
KILCUNDA	—	No Data	No Data
CAPE LIPTRAP	—	—	—
PROM WESTSIDE	—	NS	+
PROM EASTSIDE	NS	No Data	No Data
CLIFFY GROUP	NS	No Data	No Data